

# HOW TO ASSEMBLE YOUR FALLING FOLIAGE SPINNER

## Parts

These are the parts that should come in the box:



## Installation: Pole Anchoring

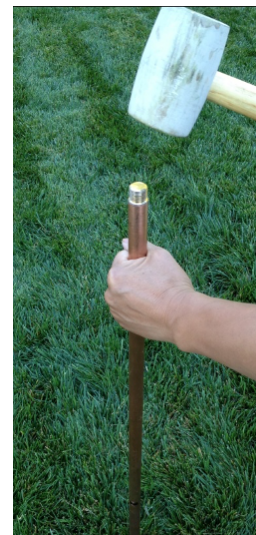
### STEP 1.

Gather these parts: one pole with beveled edge and three support stakes.



### STEP 2.

Hammer the main pole into the ground using a **Rubber Mallet** until the black line touches the ground (about 1 ft. deep).



\* We recommend you use blue Loctite thread locker if in windy area



# Installation: Pole Anchoring

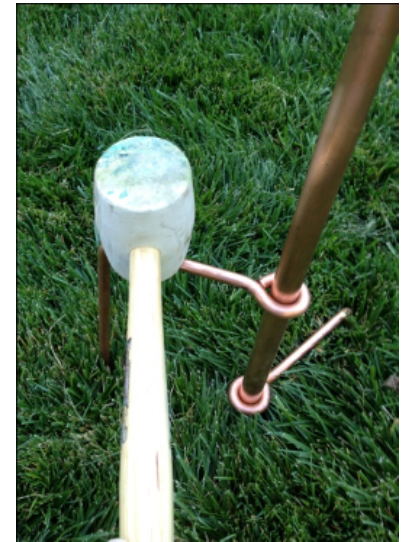
## STEP 3.

Slide a support stake into the main pole and hammer it into the ground.



## STEP 4.

Slide a second support stake into the main pole. Position it ~120 degrees away from the first stake and hammer it into the ground.

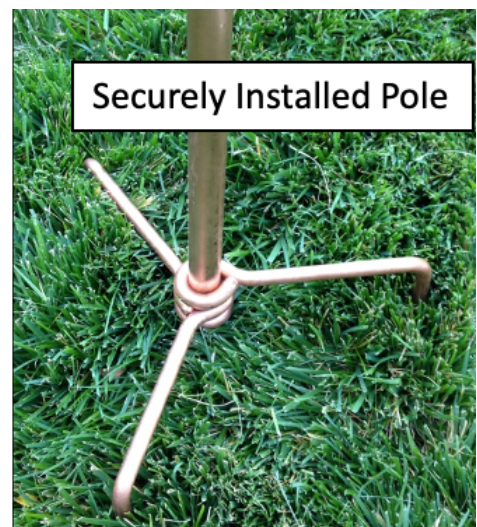


## STEP 5.

Slide a third support stake on to the main pole. Position it evenly away from the first two stakes and hammer it into the ground.



## STEP 6.



## STEP 7.

Take the pole with the trademark "**Stanwood Wind Sculpture**" engraving and connect its female end to the male end of the ground pole. After the poles are connected, the trademark should be legible from the bottom up.

\*Check all screw tightness periodically, and tighten if needed

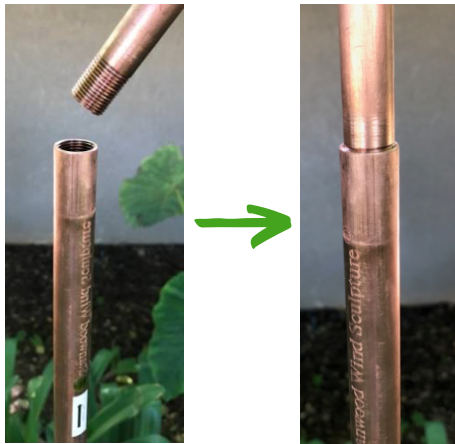
Stanwood Wind Sculpture ↑



# Installation: Falling Foliage Spinner

## STEP 8.

Tightly screw the top pole (to hold spinners) into its place.



## STEP 9.

Insert the end of a copper stem fully into a hole on the brass hub.



## STEP 10.

Align the stem with the brass screw. Tighten the screw with a Philips screwdriver.



## STEP 11.

Do the same for all 6 copper stems.



## STEP 12.

Do the same for all of the spinners.



## STEP 13.

Slide the smallest spinner into the pole.



\*Check all screw tightness periodically, and tighten if needed

\* We recommend you use blue Loctite thread locker if in windy area



# Installation: Falling Foliage Spinner

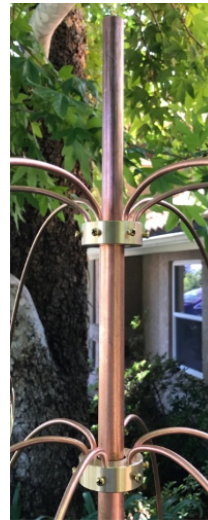
## STEP 14.

Slide a spacer onto the pole.



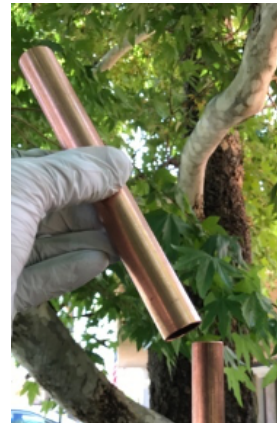
## STEP 15.

Slide the medium spinner onto the pole.



## STEP 16.

Slide another spacer onto the pole.



## STEP 17.

Slide the largest spinner onto the pole.



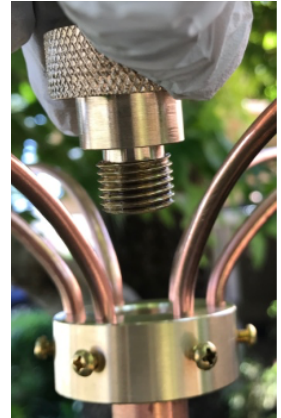
## STEP 18.

Partially assembled spinner.



## STEP 19.

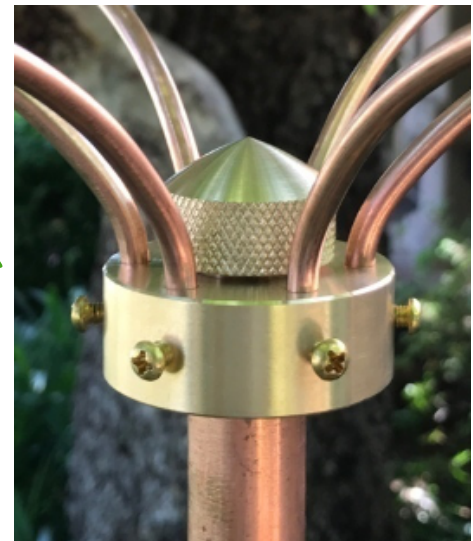
Cover top of the pole with the mushroom shaped nut.



## STEP 20.

Done.

\*Check all screw tightness periodically, and tighten if needed



ANY QUESTIONS PLEASE CONTACT US AT:  
[stanwoodimports@yahoo.com](mailto:stanwoodimports@yahoo.com)  
[sales@orientalhomegarden.com](mailto:sales@orientalhomegarden.com)

Tel: (888) 670-5570

Copyright © Stanwood Imports / Oriental Touch LLC

